

For those who want to widen their stance or have larger feet, TheMat 36 offers a little more room for standing. It brings the same cushion and support to comfort your feet, knees, hips, and back to a larger workspace.

## PRODUCT SPECIFICATIONS



Product Measures  
36"(W) x 24"(D)  
91.5 cm(W) x 61 cm(D)



Beveled, No-Curl Edges, and  
Durable, High-Density Core

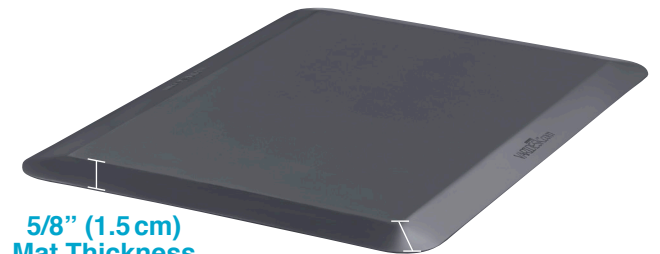


Supports Feet, Knees, Hips, and Back



24"  
(61 cm)

36"  
(91.5 cm)



5/8" (1.5 cm)  
Mat Thickness

2 3/8"  
(6 cm)